

Gains Residence

Project Totals

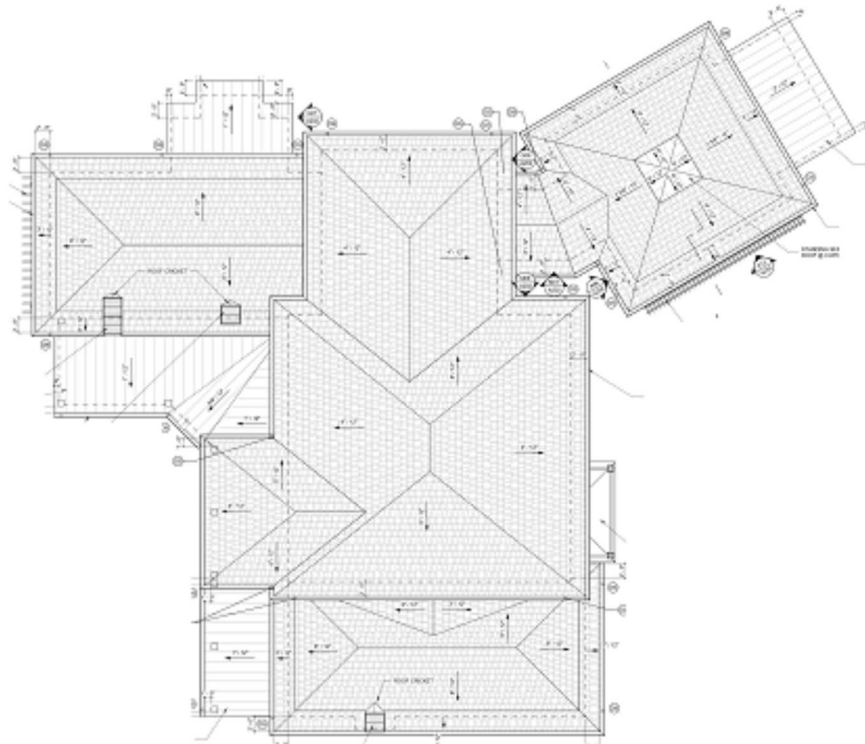
Total Roof Area - 70.08 SQ

Standard Slope (4:12-6:12)	-	29.39 SQ
Flat Slope (0:12-1:12)	-	11.74 SQ
Low Slope (2:12-3:12)	-	9.26 SQ
Steep Slope (7:12 or greater)	-	19.68 SQ
High Roof (over 1 story)	-	27.37 SQ

Roof Planes	-	46
Structures	-	1

Eave	-	560.1 LF
Flat Drip Edge	-	176.7 LF
Total Perimeter	-	736.8 LF

Ridge	-	110.2 LF
Hip	-	385.1 LF
Valley	-	153.5 LF
Slope Change	-	233.0 LF
Step Flashing	-	117.1 LF
Headwall Flashing	-	174.3 LF



© LYNCH associates architects

Waste Factor (Total Roof Area)

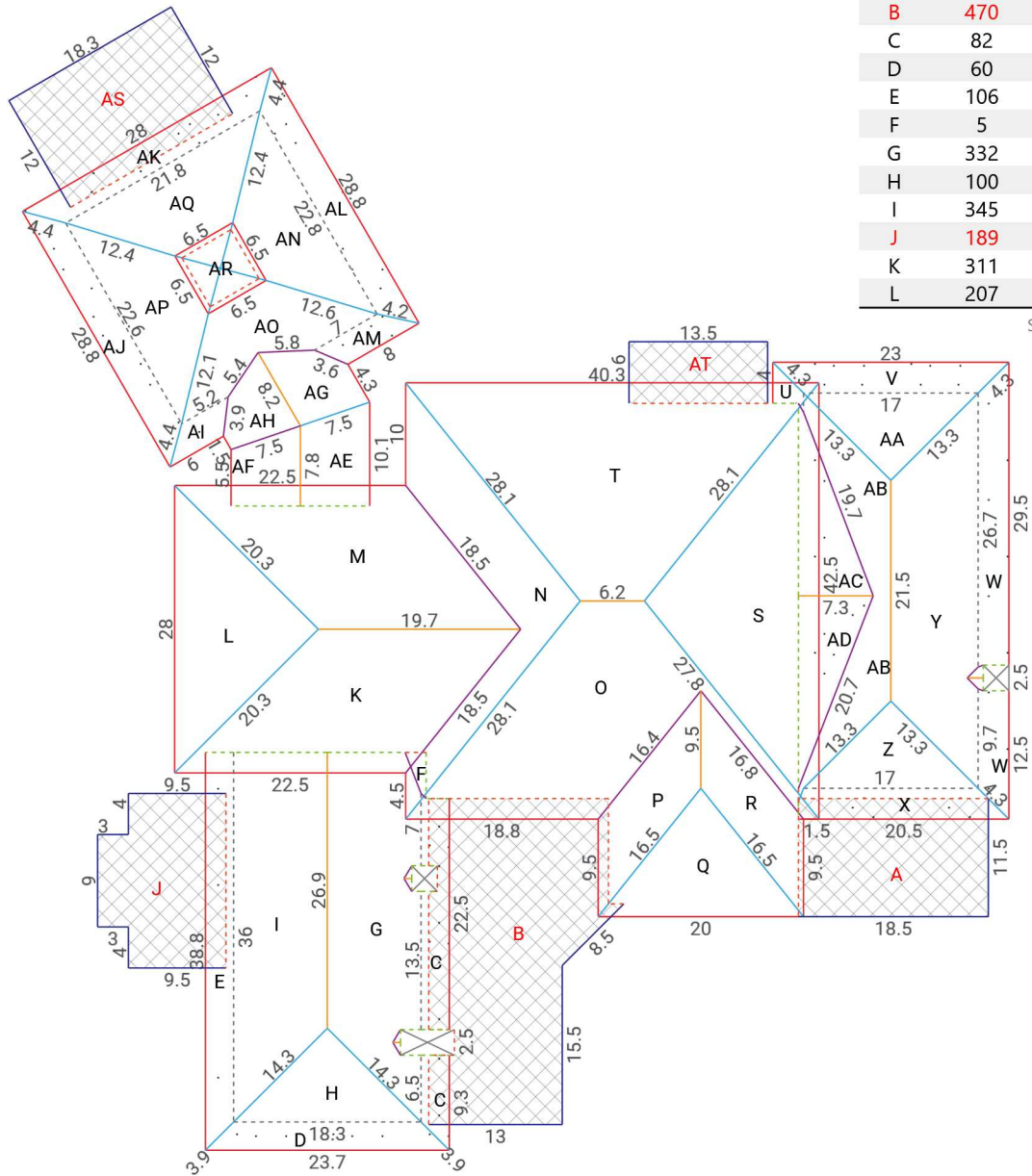
4%	-	72.88 SQ	7%	-	74.98 SQ	10%	-	77.08 SQ	13%	-	79.19 SQ
5%	-	73.58 SQ	8%	-	75.68 SQ	11%	-	77.79 SQ	14%	-	79.89 SQ
6%	-	74.28 SQ	9%	-	76.38 SQ	12%	-	78.49 SQ	15%	-	80.59 SQ

THIS REPORT IS FOR ESTIMATION PURPOSES ONLY. VERIFY ALL DIMENSIONS AND TOTALS BEFORE PURCHASING MATERIALS.
THIS REPORT IS THE PROPERTY OF SCOPE TECHNOLOGIES, INC. AND MAY NOT BE REPRODUCED WITHOUT WRITTEN CONSENT.



Roof Area Analysis - Structure 1

Gains Residence



Plane	Area(sf)	Pitch	Slope	High
A	213	1:12	F	
B	470	1:12	F	
C	82	3:12	L	
D	60	3:12	L	
E	106	3:12	L	
F	5	3:12	L	
G	332	8:12	S	
H	100	8:12	S	
I	345	8:12	S	
J	189	1:12	F	
K	311	4:12		H
L	207	4:12		H

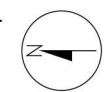
Slope: (S)teep - (L)ow - (F)lat

Plane	Area(sf)	Pitch	Slope	High
M	311	4:12		H
N	221	5:12		H
O	389	4:12		H
P	103	5:12		H
Q	132	4:12		H
R	103	5:12		H
S	391	5:12		H
T	521	4:12		H
U	8	3:12	L	
V	62	3:12	L	
W	121	3:12	L	
X	58	3:12	L	
Y	308	8:12	S	
Z	87	8:12	S	
AA	87	8:12	S	
AB	163	8:12	S	
AC	72	3:12	L	
AD	70	3:12	L	
AE	64	4:12		
AF	47	4:12		
AG	51	4:12		
AH	41	4:12		
AI	18	3:12	L	
AJ	82	3:12	L	
AK	79	3:12	L	
AL	82	3:12	L	
AM	22	3:12	L	
AN	140	8:12	S	
AO	128	8:12	S	
AP	137	8:12	S	
AQ	142	8:12	S	
AR	47	6:12		H
AS	220	1:12	F	
AT	81	1:12	F	

Slope: (S)teep - (L)ow - (F)lat

Drawing Key

- Eave
- Hip
- Ridge
- Parapet
- Clerestory
- - - Headwall Flashing
- \\ Ice & Water Areas
- Rake Edge
- Valley
- Flat Drip Edge
- Coping
- - - Slope Change
- - - Step Flashing
- ▨ Flat Slope Area



Totals (SQ)	
1:12	- 11.7
3:12	- 9.3
4:12	- 20.7
5:12	- 8.2
6:12	- 0.5
8:12	- 19.7
Flat	- 11.7
Low	- 9.3
Steep	- 19.7
High	- 27.4