



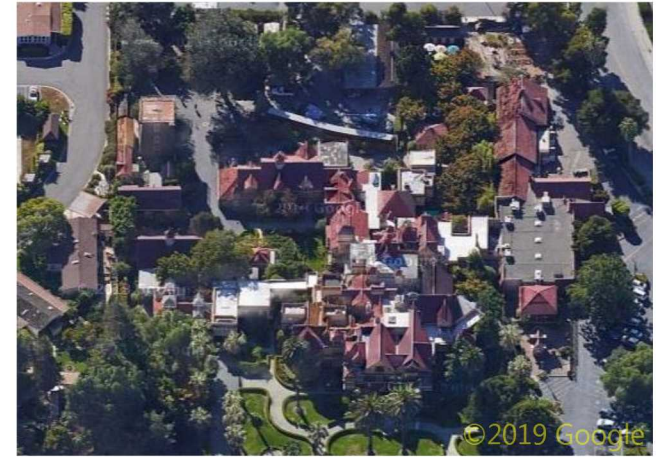
525 S Winchester Blvd, San Jose, CA 95128

Project Totals

Total Roof Area	-	605.49 SQ
Standard Slope (4:12-6:12)	-	33.32 SQ
Flat Slope (0:12-1:12)	-	189.18 SQ
Low Slope (2:12-3:12)	-	7.77 SQ
Steep Slope (7:12 or greater)	-	375.23 SQ
Roof Planes	-	21
Structures	-	1
Eave	-	4546.76 LF
Rake	-	1961.47 LF
Flat Drip Edge	-	1359.89 LF
Clear Story	-	274.00 LF
Parapet	-	903.24 LF
Total Perimeter	-	9045.36 LF
Coping	-	189.51 LF
Ridge	-	1417.68 LF
Hip	-	1397.14 LF
Valley	-	1305.64 LF
Slope Change	-	486.00 LF
Step Flashing	-	1324.30 LF
Headwall Flashing	-	4369.51 LF



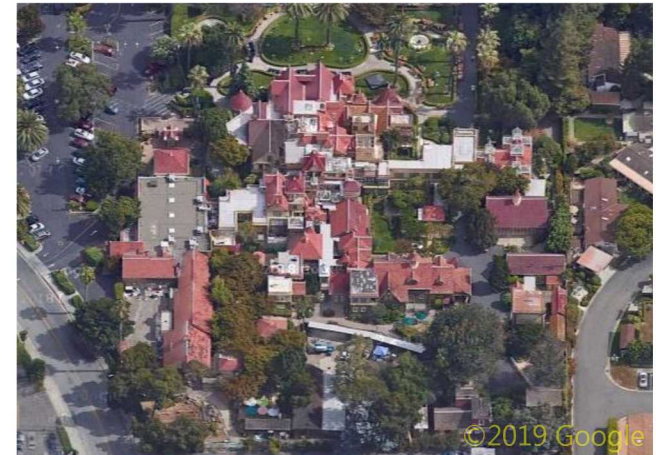
North



East



South



West

THIS REPORT IS FOR ESTIMATION PURPOSES ONLY AND DOES NOT INCLUDE WASTE, VERIFY ALL DIMENSIONS AND TOTALS BEFORE PURCHASING MATERIALS.
THIS REPORT IS THE PROPERTY OF SCOPE TECHNOLOGIES, INC. AND MAY NOT BE REPRODUCED WITHOUT WRITTEN CONSENT

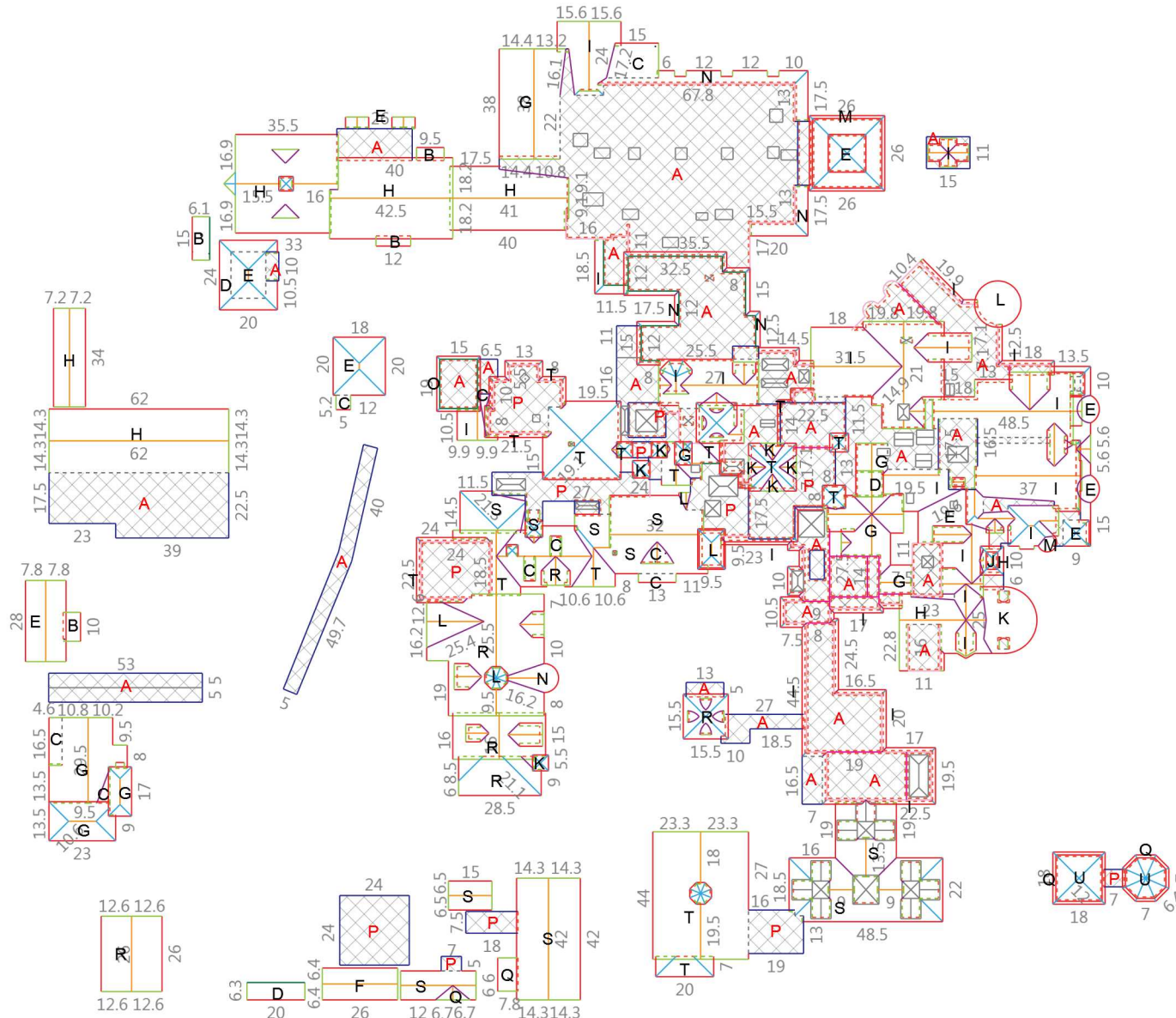
Roof Area Analysis - Structure 1

525 S Winchester Blvd, San Jose, CA 95128

Plane	Area(sf)	Pitch	Slope
A	15,406	1:12	F
B	262	2:12	L
C	514	3:12	L
D	482	4:12	
E	2,534	6:12	
F	331	7:12	S
G	3,113	8:12	S
H	6,900	10:12	S
I	8,543	12:12	S
J	37	14:12	S
K	889	16:12	S
L	991	18:12	S
M	359	22:12	S
N	1,784	24:12	S
O	202	36:12	S
P	3,512	1:12	F
Q	316	6:12	
R	4,427	8:12	S
S	4,388	10:12	S
T	4,798	12:12	S
U	759	18:12	S

Slope: (S)teep - (L)ow - (F)lat

Totals (SQ)		Totals (SQ)	
1:12	- 189.2	16:12	- 8.9
2:12	- 2.6	18:12	- 17.5
3:12	- 5.1	22:12	- 3.6
4:12	- 4.8	24:12	- 17.8
6:12	- 28.5	36:12	- 2.0
7:12	- 3.3	Flat	- 189.2
8:12	- 75.4	Low	- 7.8
10:12	- 112.9	Steep	- 375.2
12:12	- 133.4		
14:12	- 0.4		



Drawing Key

- Eave
- Hip
- Ridge
- Parapet
- Clear Story
- - - Headwall Flashing
- Ice & Water Areas
- Rake Edge
- Valley
- Flat Drip Edge
- Coping
- - - Slope Change
- - - Step Flashing
- ▨ Flat Slope Area

